



**Stockport Action
for Voluntary Youth**

CHARITY CLOSURE AND IMPACT REPORT

ANTICIPATED IMPACT OF CLOSURE FOLLOWING AN END TO
ALL YOUTH PROVISION PROVIDED BY STOCKPORT ACTION
FOR VOLUNTARY YOUTH

SERVICE END DATE: 29TH MARCH 2018

Vicky Bloomfield

STOCKPORT ACTION FOR VOLUNTARY YOUTH | STOCKPORTSAVY@GMAIL.COM

SAVY Stockport Action *for Voluntary Youth*

Content:

- Page 2. Charity details and closing statement
- Page 3. Details of services ending in March 2018
- Page 4. Areas covered
- Page 5. Impact in numbers
- Page 6. ASB statistics – Stockport (borough wide)
- Page 7. ASB statistics – Brinnington (targeted)
- Page 8. Associated outcomes – Youth Work delivery
- Page 9. HACT social value calculator
- Page 10. Economic cost of crime
- Page 11. Summary of closure and associated impact

Author: Victoria Bloomfield, SAVY Youth Work Manager

Date: 15th March 2018

Details of Charity:

Name: Stockport Action for Voluntary Youth (SAVY)
Status: Charitable Incorporated Organisation (CIO)
Charity Number: 1164721
Date / year established as an organisation: 1991

Executive Board:

Margaret Brookes MBE – Chief Executive
David Wood MBE – Deputy Chief Executive
Robin Tryon – Treasurer
Geoff Dodd – Trustee
Kieran McMahon – Trustee
Sharon Fraser – Trustee

Contact details post March 2018: stockportsavy@gmail.com

Closing Statement:

SAVY CLOSURE MARCH 2018

“Stockport Action for Voluntary Youth, or ‘SAVY’ to those who know us best will be closing our youth centre doors for the last time on Thursday 29th March 2018. This is due to difficulty in securing core funding that we need to run the charity in a safe and professional manner. Since 1991 SAVY have had young people’s needs at the heart of all that we do and it is with deep regret, we announce an end to our Youth Work delivery across the borough of Stockport. With an amazing team of professional Youth Workers we have enjoyed seeing young people flourish and develop in to young adults, becoming active citizens in their local communities. On the behalf of the team and our Executive Committee, thank you to the partners and volunteers who have supported us throughout and to the children and young people who have put their faith in us for almost 30 years. We will be sharing our achievements and memories in our final newsletter, March 2018”.

Vicky Bloomfield, SAVY Manager

Statement circulated: 23rd February 2018

‘Live’ regular services at date closure agreed - 23.2.18

All sessions run on a weekly basis, 48 weeks of the year. This allows for Bank Holiday’s and Christmas closure. All sessions will end before 30th March 2018.

Group	Funder	Location	Day / Time	No. young people	Criteria for attending	End Date
Town Centre Detached Youth Work	GM Combined Authority	Town Centre and surrounding areas, including Edgeley	Monday 5 – 8pm	25 – 50 dependent on weather / time of year.	Engage yp aged 11+ at risk of engaging in ASB and all other ‘risky’ behaviour.	26.2.18
Offerton Juniors	Stockport Homes	Offerton Community Centre	Wednesday 5 – 7pm	35	Aged 8 – 12 years in Offerton	28.3.18
Brinnington Juniors	Stockport Homes	Brinnington Youth Centre	Wednesday 5 – 7pm	25	Aged 8 – 12 years in Brinnington	14.2.18
Brinnington Detached Youth Work	Stockport Homes	Brinnington including park and rec.	Thursday 5 – 8pm	25 – 50 dependent on weather / time of year.	Engage yp 11+ at risk of ASB, CSE, grooming in to crime, all other risky behaviour	22.2.18
Safe Space Targeted wellbeing provision with youth workers and counsellor.	GM Combined Authority / Kershaw Trust.	The Space Petersgate Stockport Town Centre	Thursday 5 - 7pm	8 – 12 young people. Targeted provision.	YP aged 14 – 19 who struggle to maintain positive mental health and are at risk of entering tier 2 / 3 services.	29.3.18
Town Centre and Edgeley	GM Combined Authority	Town Centre and surrounding areas, including Edgeley	Thursday 5 – 8pm	25 – 50 dependent on weather / time of year.	YP aged 11+ at risk of engaging in ASB and all other ‘risky’ behaviour.	22.2.18
The Space Friday Night , centre based Youth Provision	GM Combined Authority	The Space Petersgate Stockport Town Centre	Friday 5 – 7pm	8 - 12	Aged 13 - 17 Aimed at yp who have engaged in DYW and need targeted support / safe space to be with friends.	23.2.18
Friday Night Hangout Targeted youth provision for young disabled people.	Kershaw Trust / Coop Members funding	Woodbank Youth Centre, Offerton.	Friday 6.30 – 8.30pm	12 - 20	Age range 14 – 25 Young disabled people who face barriers to socialising independently. FNH offers a safe space.	28.3.18
Werneth / Bredbury and ‘hot-spotting’ Detached Youth Work	GM Police J Division / Youth Offending Service	Hot-spotting in areas of increased ASB.	Friday 5 – 8pm	25 - 50	Engage yp aged 11+ at risk of engaging in ASB and all other ‘risky’ behaviour.	23.2.18

Areas covered:

Inclusive of Centre Based, Detached, Targeted Youth Provision and half term 'fighting food poverty' diversionary activities.

Priority 1 indicators of high deprivation– Stockport JSNA Report 2016 - 19

Adswood – **Priority 1 area**

Bridgehall – **Priority 1 area**

Brinnington – **Priority 1 area**

Cheadle Heath and Swythamley housing estate

Edgeley and Alexander Park

Heaton Norris and Lancashire Hill – **Priority 1 area**

Offerton

Stockport Town Centre and surrounding area – Priority 1

Werneth and Bredbury



A high % of neighbourhoods SAVY provide youth work in are considered to be areas of high deprivation and are in close proximity to the Town Centre of Stockport.

Impact in numbers – 1 week

9
YOUTH SESSIONS

22
HOURS OF YOUTH WORK DELIVERY

90
YOUNG PEOPLE RECEIVING A HOT MEAL (centre-based provision)

300
YOUNG PEOPLE ACCESSING PROVISION (approx. based on previous reports)

600
HOURS OF CONTACT (based on all young people attending 2 hours per week)

Impact in numbers – 12 months (based on 48 weeks of delivery)

432
YOUTH SESSIONS

1056
HOURS OF YOUTH WORK DELIVERY

4320
YOUNG PEOPLE PER WEEK RECEIVING A HOT MEAL (centre-based provision)

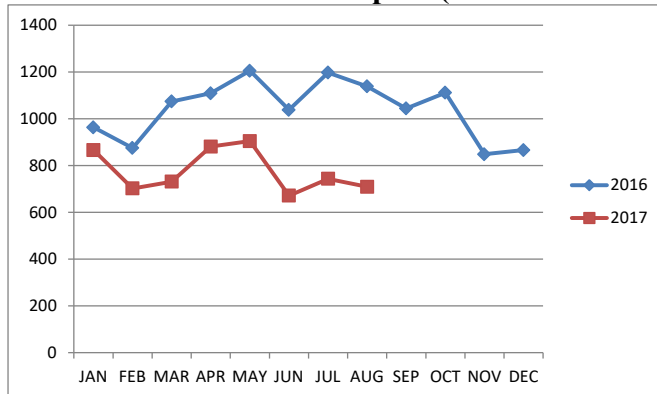
28,800
HOURS OF CONTACT (based on all young people attending 2 hours per week)

£120,000
Cost per year to deliver service - See full published accounts available on request.

See HACT Social Value calculations on page: 8

Statistics provided by GM Police. See GMPCC Grant Evaluation Oct 17 for full report.

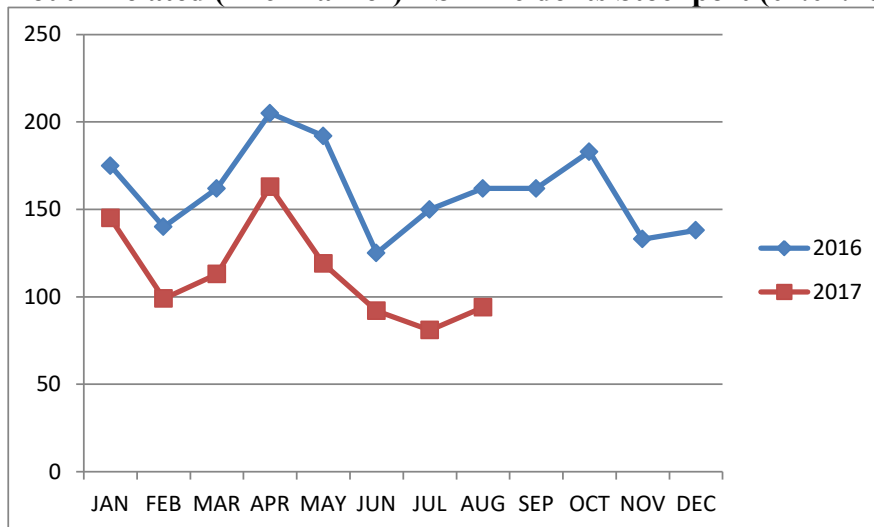
All ASB Incidents in Stockport (01.01.16 to 31.08.17)



When comparing the 7 months of the initiative (01.01.17 to 31.07.17) (5498 Incidents), with the same 7-month period during the previous year (7461 Incidents), there was a 26% (-1963 Incidents) reduction in total ASB Incidents for the J Division as a whole.

YOUTH RELATED (L16) ASB INCIDENTS

Youth Related (L16 Marker) ASB Incidents Stockport (01.01.16 to 31.08.17)



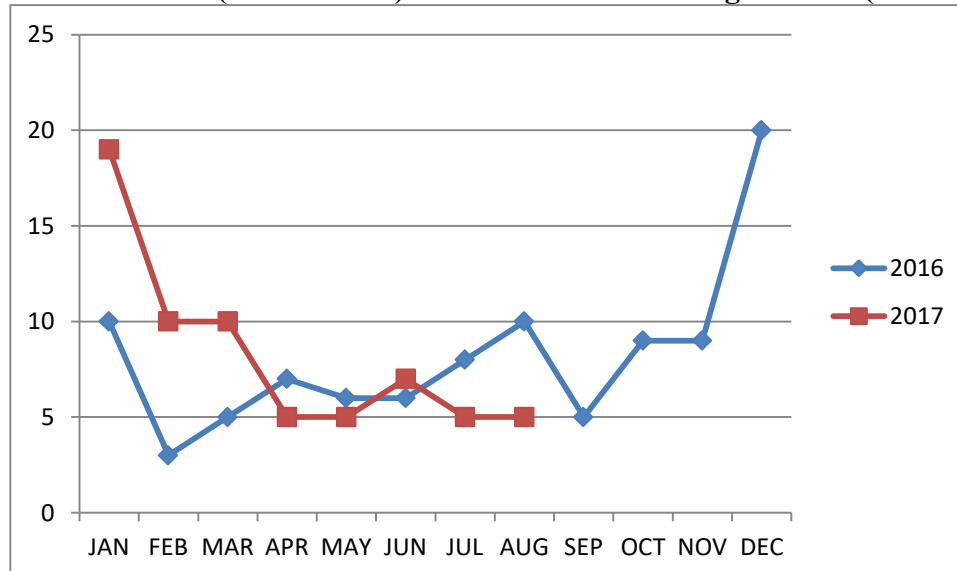
When comparing the 7 months of the initiative (01.01.17 to 31.07.17) (812 Incidents), with the same 7-month period during the previous year (1149 Incidents), there was a -29% (-337 Incidents) reduction in Youth Related (L16) ASB Incidents for the J Division as a whole.

Anti Social Behaviour Impact continued

Prevention: Implementing measures that prevent ASB from happening and diverting people from ASB.

Following a concentrated piece of work in Brinnington we received the following statistics from Inspector Baker, GM Police.

Youth Related (L16 Marker) ASB Incidents Brinnington Beat (01.01.16 to 31.08.17)



When comparing the 7 months of the initiative (01.01.17 to 31.07.17) (61 Incidents), with the same 7-month period during the previous year (45 Incidents), there was a 36% (+16 Incidents) increase in Youth Related (L16) Marker ASB Incidents for the Brinnington Beat.

This increase is in contrast to the -29% reduction seen for the J Division as a whole. However, it can be seen that there was a spike in December 2016, that continued into January 2017 and that 4 of the last 5 months (Apr to Aug 2017) have tracked below the levels seen for the same months during 2016.

Associated Outcomes – Professional Youth Work Delivery:

SAVY promote and work towards the values and ethics of Youth Work as defined by the National Youth Agency and the best outcomes as defined by Helping Children Achieve More (Every Child Matters) legislation (Children's Act 2004).

SAVY work towards and achieve the following outcomes in partnership with statutory and voluntary providers including Stockport Youth Offending Service, Social Housing Providers, Life Leisure and the Independent Sector Forum - charities include Beacon Counselling, Disability Stockport, Stockport Mind and Kids.

A comprehensive list of outcomes and evaluation of all SAVY youth projects is available upon request.

Outcomes include:

Reduction in ASB amongst young people aged 8+

Clearer signposting and pathways to statutory and voluntary sector provision

Identification of young people who are at risk / victim of Child Sexual Exploitation

Identification of NEET young people not engaging in education and / or any other service provider

Increased representation of young people's voices being heard at a strategic level

Providing safe spaces as an alternative to young people congregating in un-safe areas / ASB 'hot-spots'

Providing positive activities at a time and place suitable for young people

Reduction in organised / gang related crimes

Increase in civic pride – providing young people with the opportunity to become 'active citizens', reducing vandalism and damage to local facilities

Increase in confidence and positive mental health

Reduction in food poverty with hot meals provided at all youth groups

SAVY Stockport Action for Voluntary Youth

SAVY STOCKPORT ACTION FOR VOLUNTARY YOUTH - CLOSURE OF CHAIRTY AND IMPACT REPORT

MARCH 2018

HACT Social Value calculator: Based on 300 regular attendees per week.

Associated outcome / value	Evidence needed to apply value	Which Survey / Activity?	Average Person Value	Age – Under 25	Total Social Value
Regular attendance at voluntary / local Organisation	Record of individuals regularly attending group	Employment Survey	£1,773	300	£531,900.00
No problem with teenagers hanging around	Relevant survey / questionnaire	Your local environment survey	£5,760	300	£1,728,000.00
No problems with graffiti / vandalism	Relevant survey / questionnaire	Your local environment survey	£4,072	300	£1,221,600.00
Not worries about crime	Relevant survey / questionnaire	Your local environment survey	£12,274	300	£3,682,200.00
No problem with anti-social behaviour	Relevant survey / questionnaire	Your local environment survey	£6,403	300	£1,920,900.00
Able to obtain advice locally	Relevant survey / questionnaire	Your local environment survey	£2,457	300	£737,100.00
Access to internet	Record of individuals accessing service	Financial inclusion survey	£2,413	300	£723,100.00
Go to youth clubs	Relevant survey / record of attendance	Youth Survey	£2,300	300	£690,000.00
Relief from depression / anxiety (youth)	Relevant survey	Youth survey	£11,819	300	£3,562,700.00
Improvement in confidence (youth)	Relevant survey	Youth Survey	£9,283	300	£2,784,900.00
Never arrested	Relevant survey	Youth Survey	£3,684	300	£1,105,200.00

Total: £18,688,400.00

Total per young person attending regular provision: £62,294.66

See <http://www.hact.org.uk/value-calculator> for evident on social value calculations.

Evidence of cost based on 300 young people regularly attending structured youth provision.

The Economic cost of crime

Youth Work develops young people's ethics and principles, preparing them for adulthood. In challenging negative behaviours and providing a safe space, one of the intended outcomes is to reduce the number of young people entering the criminal justice system.

In reducing the number of young people falling victim to / engaging in crime and nuisance behaviour there is a visible saving to public services such as the Police, Youth Offending Service and Social Services.

See reference; Home Office Report: *The Economic Cost of Crime Against Individuals and Households 2003/04* and *The Tax Payers Alliance (TPA) – The Cost of Crime 2007-08*

Estimated average cost of crimes by crime type and cost category.

(This is an indication only - Cost for 2018/19 will be significantly higher)

Offence Category	Average Cost (per offence)
Violence against the person	£11,617
Wounding	£8,852
Sexual offences	£35,095
Common assault	£1,607
Robbery	£8,129
Theft – not vehicle	£634
Theft of vehicle	£4,138
Criminal damage	£967

These figures include; Physical and emotional impact of victims, health services and criminal justice system.

Recorded crime in England, Wales and Northern Ireland cost nearly £15 billion in 2007, equivalent to nearly £275 for every person.

Summary of closure and anticipated impact:

Following local government cuts in in 2011/12, Stockport MBC were instructed to make further cuts in 2013, in the region of £12,000,000. This saw an end to Council-ran Youth Service and further cuts to the community and voluntary sector. In a quote provided by the M.E.N on the 8th Feb 2013,

“The cuts the Lib Dems have announced fall hardest on young people, the vulnerable and dedicated council staff.”

Almost 5 years to the day, SAVY announced closure due to a lack of opportunity to secure core funding needed to manage and coordinate the organisation, and to also ensure the service was ran safely and effectively for the young people of Stockport.

In providing a borough wide service, SAVY’s closure will have an impact on young people across Stockport. We estimate an increase in the number of young people engaging in anti-social behaviour, specifically in the town centre and surrounding areas. With fewer services and opportunities to socialise, vulnerable young people will continue to become more isolated and their mental wellbeing will be affected.

As a service we are exploring all avenues to refer young people to services that meet their needs. Services such as Stockport Youth Offending Service, Stockport Homes, Beacon Counselling and Life Leisure will continue to positively engage young people in Stockport.

Stockport Action for Voluntary Youth